



# PRELIMINARY ASSESSMENT OF CORALLIGENOUS BENTHIC ASSEMBLAGES ACROSS THE MEDITERRANEAN SEA

Melih Ertan ÇINAR<sup>1</sup>, FERAL<sup>2</sup> J.-P., ARVANITIDIS<sup>3</sup> C., DAVID<sup>2</sup> R., TAŞKIN<sup>4</sup> E., DAILIANIS<sup>5</sup> T., DOĞAN<sup>1</sup> A., GEROVASILEIOU<sup>5</sup> V., DAĞLI<sup>1</sup> E., AYSEL<sup>6</sup> V., ISSARIS<sup>3</sup> Y., BAKIR<sup>1</sup> K., SALOMIDI<sup>3</sup> M., SINI<sup>5</sup> M., AÇIK<sup>6</sup> S., EVÇEN<sup>1</sup> A., DIMITRIADIS<sup>5</sup> C., KOUTSOUBAS<sup>5</sup> D., SARTORETTO<sup>7</sup> S., ÖNEN<sup>1</sup> S. and with contributors\*  
<sup>1</sup> Ege University, Faculty of Fisheries, İzmir, Turkey; <sup>2</sup> CNRS-IMBE, France; <sup>3</sup> HCMR, Greece; <sup>4</sup> CBÜ, Turkey; <sup>5</sup> NMPZ, Greece; <sup>6</sup> DEÜ, Turkey; <sup>7</sup> IFREMER, France \*(list on [www.cigesmed.eu](http://www.cigesmed.eu))

## INTRODUCTION

Coralligenous communities represent some of the most productive and diverse biological structures in the Mediterranean (Laubier, 1966; Laborel, 1987). They generally develop on rocks in dim-light conditions and mainly occur in the circalittoral zone. These assemblages are directly or indirectly subjected to human-related pressures such as sedimentation due to pollution, invasion by alien species, physical damages by divers or nets, bioerosion by borers and grazers, and climate change (Ballesteros, 2006). The fragility of the coralligenous habitats is related to the stability of the environment in which it has evolved, the combined effects of erosion and bioconstruction, and the low demographic dynamics of their inhabitants (Linares et al., 2010).

This paper aims to summarize the results of the first field surveys performed within the framework of the EU SEAS-ERA project CIGESMED ([www.cigesmed.eu](http://www.cigesmed.eu)), aiming to assess the diversity of benthic coralligenous assemblages across the Mediterranean.

## MATERIAL AND METHODS

Scuba-assisted surveys within coralligenous habitats (depths down to ca. 40 m) were performed at 6 sites in Turkey (Aegean and Levantine Seas), 7 sites in Greece (Aegean and Ionian Seas) and 7 sites in south France (Gulf of Lions) in 2013. Coralligenous assemblages were determined through the use of visual count techniques (e.g. direct observations and photographic quadrats). Photoquadrats were analyzed using photoQuad software.



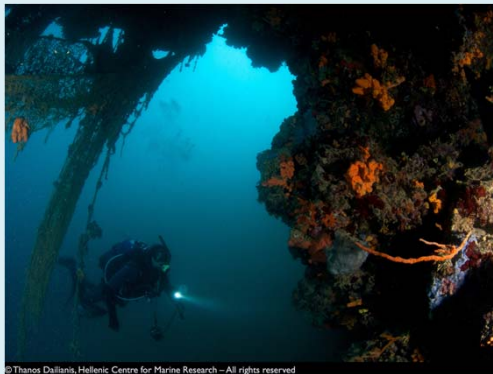
Sampling sites



Application of photoquadratic method

## RESULTS

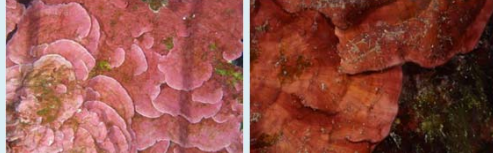
A total of 267 species belonging to 11 systematic groups were encountered. Algae ranked first in terms species richness (83 species), followed by Porifera (55), Cnidaria (32), Bryozoa (22) and Echinodermata (21). The highest species richness was reported in the French sites (172), followed by those in Turkey (107) and Greece (93). Four invasive species (*Caulerpa cylindracea*, *Styopodium schimperi*, *Amphistegina lobifera* and *Synaptula reciprocans*) were found in Turkey, 1 species (*Womersleyella setacea*) in Greece, and 3 species (*C. cylindracea*, *W. setacea* and *Acrothamnion preissii*) in France. Several species of algae (e.g. *Lithophyllum stictaeforme*, *Mesophyllum alternans*) and sessile animals (e.g. *Axinella* spp., *Madracis pharensis*, *Halocynthia papillosa*) were shared among all studied areas. Gorgonians (e.g. *Paramuricea* spp., *Eunicella* spp.), on the other hand, were commonly recorded at the western Mediterranean locations and, less so, in the eastern basin, since they were recorded only in one site (Lambiri) in Greece (Ionian Sea).



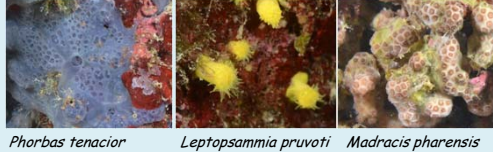
Coralligenous in Turkey (upper), Greece (middle) and France (lower)



*Caulerpa cylindracea*    *Halimeda tuna*    *Flabellia petiolata*



*Lithophyllum stictaeforme*    *Peyssonnelia squamaria*

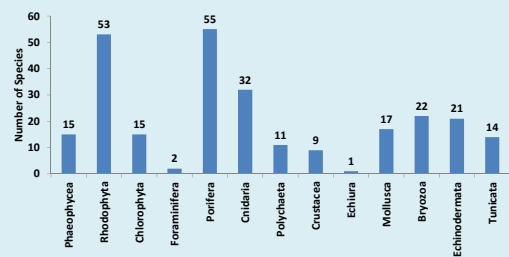


*Phorbas tenacior*    *Leptopsammia pruvoti*    *Madracis pharensis*

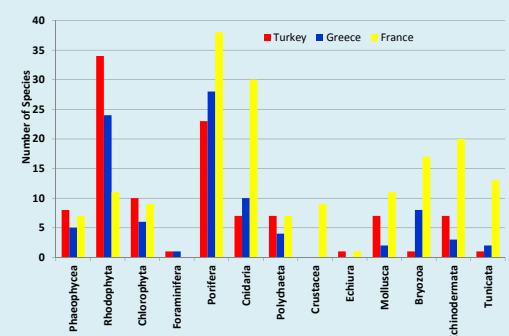


*Rocellaria dubia*    *Echinaster sepositus*    *Halocynthia papillosa*

Some coralligenous species common in the eastern Mediterranean



Total number of species in each taxonomic group



Number of species of taxonomic groups in each country

Through the applied underwater visual survey techniques, coralligenous habitats at different sites along the northern Mediterranean coastline exhibited a certain degree of diversity. However, all surveys performed conducted so far were preliminary, hence the number of reported species is expected to increase both following the upcoming, exhaustive CIGESMED surveys, as well as in future scheduled attempts that will elucidate the taxonomic status of species not presently identified at the species level.

The present study detected different coralligenous assemblages in the western and eastern Mediterranean Sea. In the western basin, gorgonians were found to be dominant even in shallow-depths, whereas these animals were rare or absent in the first fieldwork session performed at the eastern Mediterranean sites. However, a number of algae and invertebrates were common in the different Mediterranean areas and could be useful for future monitoring programs and the implementation of biotic indices that have already been developed (e.g. Index-Cor) or will be developed within the framework of CIGESMED

## ACKNOWLEDGMENTS

Works are supported by: France - CNRS / LIGAMEN / IFREMER; Greece - GSRT and Turkey - TÜBİTAK

## BIBLIOGRAPHY

BALLESTEROS E. (2006) - Mediterranean coralligenous assemblages: a synthesis of present knowledge. *Oceanogr. Mar. Biol.: Ann. Rev.*, 44: 123-195.

LABOREL J. (1987) - Marine biogenic constructions in the Mediterranean, a review. *Sci. Rep. Port-Cros Natl. Park*, 13: 97-127.

LAUBIER L. (1966) - Le coralligène des Alberes. Monographie biocénotique. *Ann. Inst. Oceanogr. Paris*, 43: 137-316.

LINARES C., ZABALA M., GARRABOU J., COMA R., DIAZ D., HEREU B., DANTART L. (2010) - Assessing the impact of diving in coralligenous communities: the usefulness of demographic studies of red gorgonian populations. *Sci. Rep. Port-Cros natl. Park, Fr.*, 24: 161-184.